



1 Quality first teaching

New staff induction. - 3 ECTs + 2.

New and refresh training for key strategies of RWI, Lit and Lang and Inspire Maths.

Research led CPD focussing on retrieval practice.

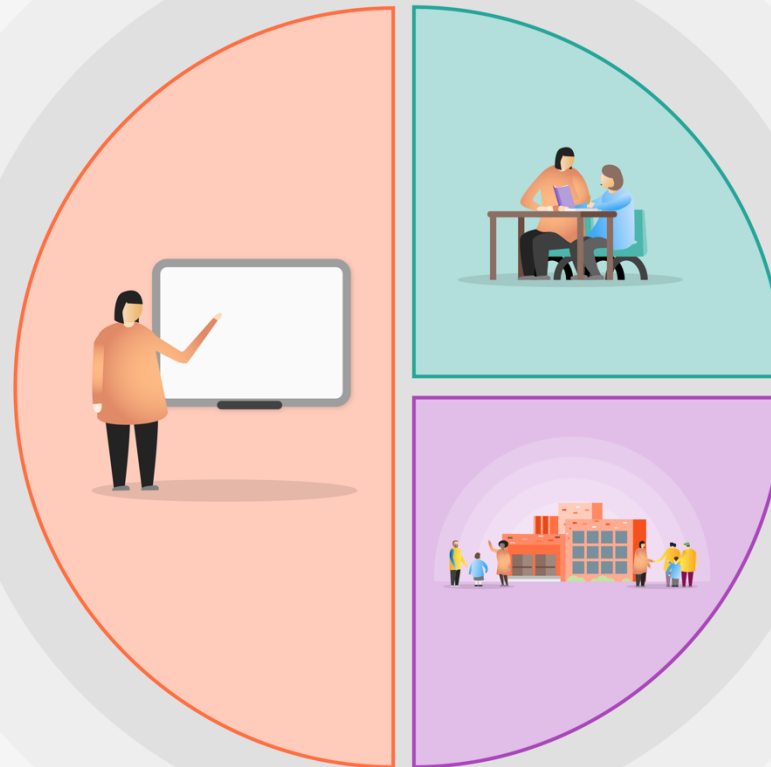
Continued development of Maths mastery approach. NWLH3

Home learning and communication.

Frequent low stakes adaptive testing to inform 12 week cycle focusing on retrieval practice, summative and formative assessment.

Reduce workload during assessment cycle by targeted and automated use of technology. Allow teachers to concentrate on preparing high quality and responsive teaching.

Whole school focus on language acquisition- oracy and reading.



2 Targeted academic support

High EYFS adult to pupil ratio. Increase meaningful interactions.

TalkBoost

RWI Groups

Development of TAs

Pastoral staff provide 1:1 and small group support for identified children.

Reciprocal Reading

Indirect Dyslexia Learning

Mastering Number

Abacadabra

3 Wider strategies

Early doors for all pupils.

1:1 access to technology and online resources. Ensure that disadvantage is not a barrier to engagement due to technology.

Keep Up not Catch Up approach.

Same Day Intervention.

Maths meetings.

Voice 21

School staff used to cover classes rather than supply staff.

Shared signs and signals across school.

Wrap round care and food vouchers available for identified vulnerable families.